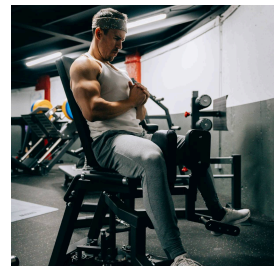
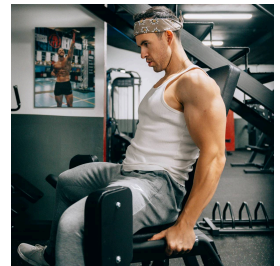


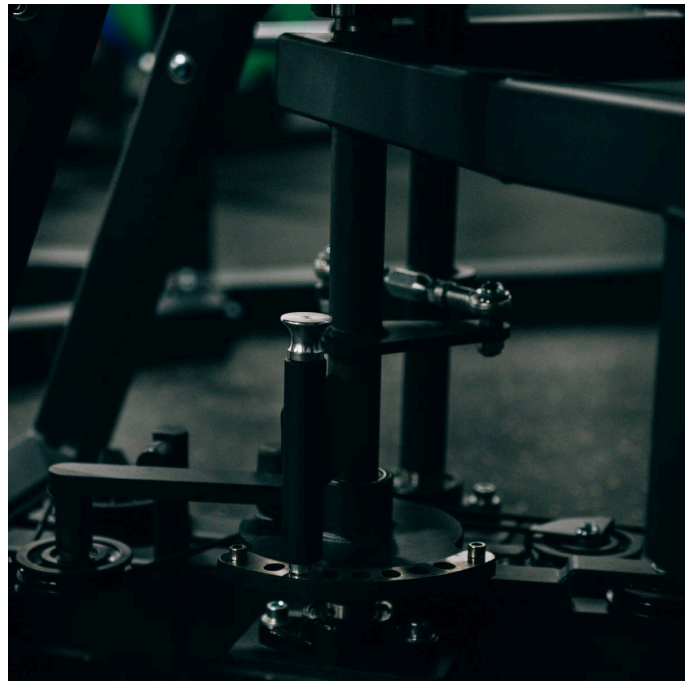


SelectORIZED Inner - Outer

SKU: EL-S9

Product Images







Short Description

The **Titanium Strength Elite Series Inner - Outer** offers users an effective way to work the inner and outer thighs. Its ergonomic design allows all adjustments to be made comfortably while the user is seated. Rotating pads make it easy to quickly transition between different exercises, and the strategically placed plate tower in the front makes it easy to change weight when switching between exercises. In addition, it has a 7-position adjustable range of motion and a double footrest to ensure a safe and comfortable training experience.

Description

Why should you buy the Titanium Strength Elite Series Inner - Outer?

With a clean and classic look, the **Elite Series** offers irons designed for the most intense workouts, making it a smart choice for those looking for the perfect combination of quality, versatility and excellent performance, all without having to compromise on budget.

TECHNICAL CHARACTERISTICS

- **PLATES:** Reinforced version of the plate stack (430 x 100 x 15.5 mm), the decibel level generated during movement is lower than that of conventional plates, and the sound is soft and not shrill. Plate stack labels gradually change from green, yellow and red, providing users with a direct and clear visual view.
- **GUIDE ROD:** The guide rod is made of 25 x 2.0 mm stainless steel tube, which reduces the degree of shaking during the movement of the plate stack and makes the movement more smooth. In comparison, the conventional guide rod is made of 20 s 2.0 mm stainless steel tube.
- **INSTRUCTION GUIDE:** The training guide diagram is simple and intuitive, it shows how to train correctly and which muscle groups are involved. The axis of rotation marked with a red indicator guides the user to train in a correct position.

- **COMPONENTS:** The handle, shaft seal and plate stack pin are all made of anodized aluminum alloy.
- **CABLE:** Uses 7 x 19 braided, oiled, nylon-coated cable.
- **FRAME DESCRIPTION:** The main tube is 50 x 100 x 2.5 mm, and the secondary tubes are 50 x 75 x 2.5 mm and 50 x 50 x 2.5 mm. Each frame undergoes an electrostatic spray process, with three coats of coating and two baking processes.

SPECIFICATIONS

- **Use:** Commercial
- **Weight Stack:** 100 kg
- **Settings:**
 - On the pads to do abductor and adductor
 - 7 position range of motion
- **Dimensions:** 152 cm (Length) x 61 cm (Width) x 155 cm (Height)
- **Weight:** 186 kg

About Titanium Strength:

Leading brand in the sale of **equipment** and **machines** for **strength** and **cardio** training.

Additional Information

Use	Commercial
Colour	Black
Manufacturer	Titanium Strength
Weight (kg)	186.000000
Width cms.	61
Height cms.	155
Large cms.	152
Body Part	Legs, Glute
Total weight stack	100
Product Line	Elite Series
Cable Ratio	1:1